



# University Guide

for International Students

 Prefectural University of Kumamoto

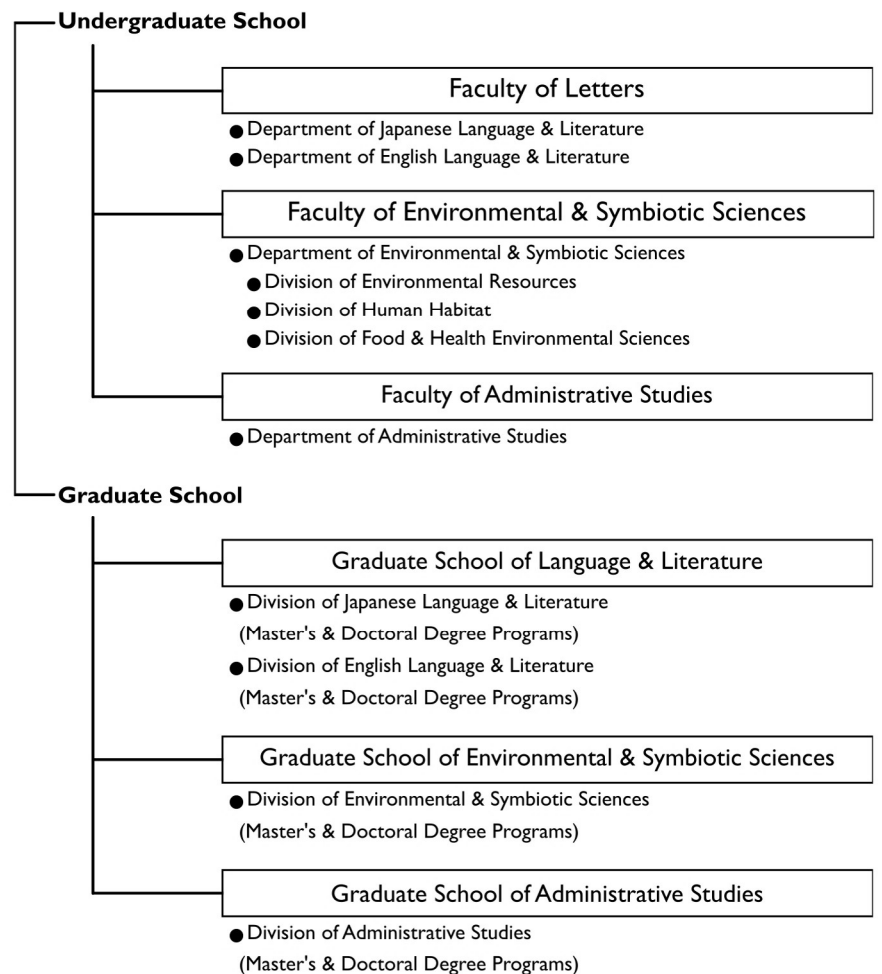


## About Us

The Prefectural University of Kumamoto (PUK), founded in 1947, consists of three faculties — the Faculty of Letters, the Faculty of Environmental & Symbiotic Sciences, and the Faculty of Administrative Studies — and the three corresponding graduate schools. About 2,200 undergraduate and graduate students are enrolled in our university. The PUK campus is very compact, allowing for easy communication between students and faculty.



## Organization Chart



## Office Hours

All professors have designated office hours, during which students can visit to discuss anything they wish to, related to their studies, future career choices, and other matters. Of course, students may also knock on professors' doors outside these hours, or email them. PUK is well renowned for its friendly environment and good relations between students, teachers, and university staff.



## Center for International Education & Exchange



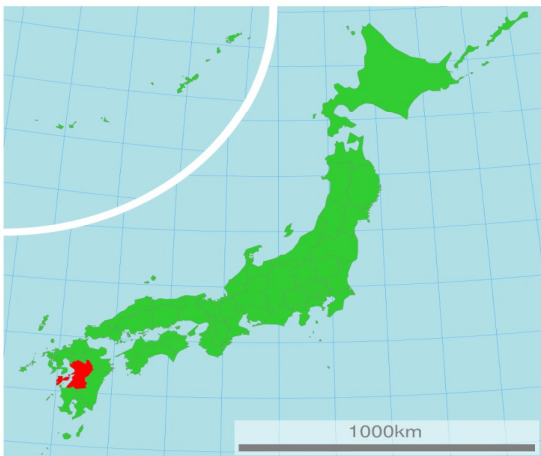
The Center for International Education & Exchange (CIEE) provides a diverse array of support for both Japanese and international students. Especially for international students, we provide assistance in public procedures and daily life in Japan in both Japanese and English. We also issue to all international students an International Students' Handbook providing information on campus life and various procedures needed to live in Japan.

## Global Lounge

The main part of the CIEE is the Global Lounge (GL). Inside the GL, students have access to various foreign language resources that can be accessed with the help of the CIEE coordinator. The GL also offers 30-minute one-on-one and small group tutoring sessions where students can discuss their foreign language learning strategies and goals with the GL coordinator. Many students who are interested in international exchange gather in the GL.



## Kumamoto Prefecture



Kumamoto Prefecture is located right in the center of Japan's southern island of Kyushu. It has a population of about 1.8 million and an area of 7409 km<sup>2</sup>. The prefecture is renowned for its beautiful landscapes and rich natural surroundings, including mountains, rivers, fertile plains, and the sea. Each area of the prefecture — including Amakusa, Aso, and Hitoyoshi — has its own industries, with agriculture, fisheries, and forestry foremost among them. Traditions from the past are still alive and well, yet are evolving to match the changing times. Kumamoto is the capital and largest city of Kumamoto Prefecture.

## Kumamoto City

PUK is situated in Kumamoto City, known as the City of Forests and Water. The city has a population of about 750,000 and the total area is around 390 km<sup>2</sup>. Rich in history and tradition, it is the home of Kumamoto Castle, one of the "Big 3" castles in Japan and the city's most famous landmark. Another well-known and much visited venue is Suizenji Park, which features miniature landscapes, small lakes, and Suizenji Joujuen, a traditional Japanese garden which has been declared a historic site of scenic beauty.



## Japan Studies


In the past, international students have found it difficult to take part in semester-long or year-long programs at PUK because of the Japanese language skills needed to attend regular classes. Our Japan Studies program was created to address that problem by offering a broad-based set of classes taught in English, some offered in the first (spring) and some in the second (autumn) semester. These classes are aimed both at international students who want to study in an English medium and home students who want to broaden their horizons and boost their English skills. In addition to the regular Japan Studies program, we also offer a short, intensive English-medium program (the Japan Studies Intensive Program) under the Japan Studies moniker whereby a partner university is invited to send a small number of students to participate with PUK students in a residential program focused on local and global issues. Note that, as of March 2021, the Japan Studies Intensive Course is temporarily suspended because of the COVID-19 crisis.



## Japan Studies - Class Schedule

	Course Title	Semester	Credits
1	Language and Culture I	Spring	2
2	Language and Culture II	Fall	2
3	Presentation English II	Fall	2
4	Study of Culture in Local Areas II	Fall	2
5	Cross-cultural Communication Seminar B I	Spring	2
6	Cross-cultural Communication Seminar B II	Fall	2
7	Science English I	Spring	2
8	Science English II	Fall	2
9	Performing Arts of Japan	Spring	2

## International Postgraduate Scholarship for Research on Mercury

 International demand for skilled professionals with advanced knowledge of environmental issues is strong. Accordingly, in 2014 we established a scholarship sponsored by Kumamoto Prefecture to foster international researchers in the mercury research field. This scholarship is for international students who will conduct specialized research, leading to a doctoral degree, on mercury at the Collaborative Graduate School with the Prefectural University of Kumamoto and the National Institute for Minamata Disease. For more information about the scholarship, please access the QR code at the top of this paragraph.

